



PALATINE Township Report

"People Serving People"



Spring 2011

Palatine Township • 721 South Quentin Road, Suite 101 • Palatine, IL 60067



SPRING IS COMING - Get Rolling...

Time to Make Appointments and RIDE THE TOWNSHIP BUS

If you are a senior 60 years of age or better, or a permanently disabled resident of Palatine Township, we can take you anywhere you would like to go in the township.

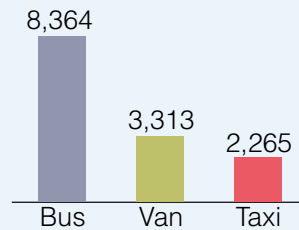
Our transportation service is curb-to-curb, runs Monday through Friday, and the cost is only \$2.00 each way. Our first pick up of the day is at 8:00 a.m. and our last pick up of the day is at 3:30 p.m.

You must register in advance with the Palatine Township Transportation Department. We are located at 721 S. Quentin Road (the corner of Quentin Road & Illinois Ave.) in Palatine.

Our Township Bus will take you shopping, to the barber/beauty shops, to a restaurant for lunch with friends, to the library, Senior Center, or anywhere you want to go in the township. Every Tuesday we drive into Arlington Heights for medical appointments.

The chart below shows the rides we provided during 2010.

13,942 Rides Provided



T.R.I.P.

We partner with four other townships to offer our TRIP Program. It is a transportation service for medical appointments only outside of the township. The qualifications are the same as the Township Program and provides service into seven townships and specific locations in Chicago.

We have added three **new** destinations to the TRIP Program ... they are:

Rush Medical Center	U of I Medical Center	North Chicago VA Center
Harrison Street	811 S. Paulina	3001 Green Bay Road
Chicago	Chicago	North Chicago

A complete list of all destinations can be found at www.palatinetownship.com.

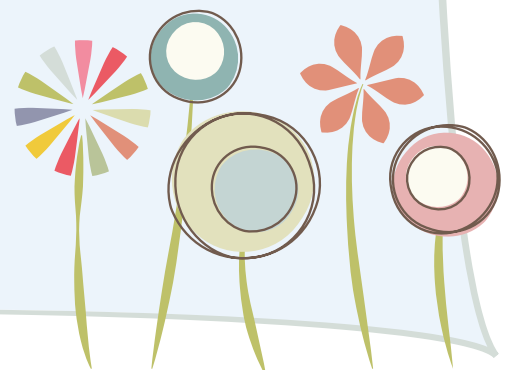
Hours of service are Monday through Friday, 5:00 a.m. to 9:00 p.m.

Call the Palatine Township Transportation Department for more about these services at 847-358-6907.

Save the Date

Annual Town Meeting - Tuesday, April 12, 2011

Join us at 7:30 p.m. at the Palatine Township Center, 721 S. Quentin Road, Palatine, to meet your elected officials and learn about the Township's important role of providing award-winning programs and services for our residents.



Hours:

Monday - Friday
8:30 a.m. - 4:00 p.m.

Saturday
8:30 a.m. - noon

Phone:
847-358-6700

FAX:
847-358-2888



It's Springtime!

Spring forward to the township and participate in our annual Spring Basket Program. This program provides financially disadvantaged children, ages 10 years and younger only, with baskets filled with goodies and small toys. The children in the program are invited to a party on April 16, where they will have the opportunity to take a picture and visit with "The Bunny," play games, color eggs and make crafts. They will also receive a special basket that was created just for them. Please stop by the township and pick out a bunny, chick, or egg cut-out which includes the name and age of the child or register on-line at www.palatinetownship.com.

For additional information or to register as a volunteer or to sponsor a child, please visit www.palatinetownship.com or contact Christine Favia, Outreach Coordinator, at 847-358-6161 or cfavia@palatinetownship.com.



CHILD SAFETY & ABDUCTION PREVENTION PROGRAM

Tuesday, May 17 at 7pm

Palatine Township, in collaboration with the Palatine Police Department, will sponsor a child safety and abduction prevention program, which is designed for children ages 7-12 and their parent(s). Crime Prevention Officers Kellie Poliquin & Todd Holtz will address safety measures children need to take in order to live safely in today's society. Although there is no fee for this program, registration is required and limited.



For additional information, contact Palatine Police Crime Prevention at 847-359-9061. To register, please contact Christine Favia, Outreach Coordinator, at 847-358-6161 or cfavia@palatinetownship.com.

Spring 2011 Employment Outlook

Winter is just about over and we are excited, happy and overjoyed to welcome the season of spring. We are gearing up for the Spring 2011 Senior Career Fair with company representatives ready to welcome and meet with our Palatine Township 50 + job seekers.

Our Senior Career Fair will take the place of the April Job Club and is scheduled for Friday, March 25, at 1 p.m. at Schaumburg High School, 1100 W. Schaumburg Road, Schaumburg, Illinois. If you are a serious job seeker, please join us and mark your calendar now.

Although the Senior Career Fair is for the senior population, the Palatine Township employment unit is here to assist anyone age 25+ in their job search. You can always call our office at 847-358-6700 to make an appointment for a personal consultation to see our Director of Employment, Val Profit. With a scheduled appointment and your resume, Val will review your skills and experience and make appropriate referrals.



Please note that on the first Monday of every month Val is available to meet with you at the Palatine Opportunity Center located on Rand Road. Give us a call, make an appointment and Val can help you transition back into the workforce !



Calendar of Events



March

- 7 Spring Basket Program Begins
- 25 Senior Career Fair

April

- 9 & 10 Palatine Historical Society Victorian Tea
- 11 & 12 Spring Baskets Due to Township
- 12 Annual Town Meeting
- 16 Spring Party & Basket Distribution
- 16 & 17 Palatine Historical Society Victorian Tea

May

- 15 Palatine Historical Society Cemetery Walk
- 17 Child Safety & Abduction Prevention Program

GIFT CARD PROGRAM - One way to help

In these tough financial times the residents of Palatine Township have generously supported their neighbors in need with donations of grocery store gift cards. In addition to the challenge of feeding their families, many people find it difficult to purchase necessary medications, provide clothing for their children, or fill up their gas tanks to travel to a job interview.

If you would like to offer assistance to individuals in our township who are facing economic hardship, please consider making a donation of a gift card to a local gas station, pharmacy, or large retail store. These small, pocket-sized cards are truly appreciated by those who receive them, and they can make such a difference for someone who is struggling financially.

The next time you are shopping for your family, please purchase a gift card in a denomination of no larger than \$25. You can mail it to or drop it off at the Palatine Township Center, 721 S. Quentin Road, suite 101, Palatine, IL 60067. Our office is open Monday through Friday from 8:30 to 4:00 p.m. or Saturday from 8:30 a.m. to 12:00 noon.

Lending Closet Is Available To You

Do you need a walker, crutches, wheelchair, cane, bath seat, commode or any supportive equipment for home use? These items are available to Palatine Township residents to borrow for a limited time at no charge from the Lending Closet. The Lending Closet is located in the Palatine Village Hall, 200 E. Wood Street, Room 266 and is open on Wednesday and Saturday from 10:00 a.m. to 11:30 a.m. and is staffed by nurses who can help you select the proper equipment. Please remember this resource if you or someone you know is elderly or recovering from orthopedic procedures and might benefit from this service. For further information, please call 847-934-3016.



Northeast Palatine Summer Camp...



For many years Palatine Township has participated in a unique partnership with the Palatine Police Department, Palatine Park District, Community Consolidated School District 15 and Palatine Opportunity Center to provide a summer day

camp to under-resourced, at-risk youth. The Northeast Palatine Summer Camp provides a positive, life enhancing educational, social, and recreational experience and will operate this year from July 18 through August 5.

Funding comes primarily from private donations and grants; therefore, community support is vital to ensure its success. If you can, please consider making a donation of \$60 to help with the registration of one child. Please make your check payable to Palatine Township-Sponsor A Child, and send it to 721 S. Quentin Road, Palatine, IL 60067. If you would like additional information about donating to the camp or have any questions, please contact Christine Favia, Outreach Coordinator, at 847-358-6161 or cfavia@palatinetownship.com.

Needy Family Fund Donations

The following donors made monetary, unrestricted donations of \$1,000 or more to the Palatine Township Needy Family Fund, posted between August 16, 2010 - January 7, 2011:

Womens Club of Inverness	\$1,000
Anonymous	\$1,200
Randy & Cathy Wagner	\$1,500
Pebble Creek Homeowners Association	\$2,120
GE Capital, Commercial Distribution Finance	\$5,000

Palatine Township Needy Family Fund Donation

Name: _____

Address: _____

City, Zip: _____

Amount of Tax-Deductible Contribution: \$ _____

Please make your check payable and mail to:

Palatine Township Needy Family Fund

721 S. Quentin Road, Suite 101, Palatine, IL 60067

Contact us at 847-358-6161 for further information.

Food Pantry Pleas and Thank You Pleas . . .

Have you ever been hungry? Really hungry? Hunger exists in our community and given today's tough economy, we anticipate that the need will continue to grow during the coming spring and summer months. During these coming months the need can become even more severe as holiday food drive supplies are depleted. But you can help us fight hunger.

The Palatine Township Food Pantry gratefully accepts donations throughout the year. Your donations of non-perishable food items such as peanut butter & jelly, dry soups, pasta sauce, canned fruits and vegetables, tuna fish, cereal and paper products will go far to help us to meet this greater need. Contact Laura at 847-358-6121 if your organization would like to hold a food drive.

Please drop off items during regular Food Pantry hours, Monday and Wednesday, from 11 a.m. until 4:00 p.m., or at the Township office during regular business hours.

Thank You!

We helped an average of 290 families a month in 2010 because of your generosity. Many thanks to the entire community for your support of our holiday food pantry tree, which added many cases of non-perishable food items to our shelves.

We are filled with gratitude to the many individuals and organizations who donate food and household items. We'd like to say a special "Thank You" to General Electric, Lavelle Legal Services and School District 15 for their large donations during the 2010 holiday season. You make a difference in the lives of these families.

We rely on the support of our volunteers. If you'd like an opportunity to "give back", please call 847-358-6121 or stop by to see where you can fit into our volunteer schedule.

Without your assistance, be it monetary, food donations, or the giving of your time and efforts, we would not be able to make the difference in the lives of our struggling neighbors. Again. . . . Thank You!

The Palatine Historical Society Invites You to Take a Step . . . or Two . . . Back in Time . . . to Enjoy a Victorian Tea at the Clayson House Museum

Tea for Two . . . or More



Mark the dates of April 9, 10, 16 and 17 for you to experience a traditional, Victorian Tea in a restored home circa the 1870's. Two seatings, 12 noon and 3:00 p.m. each day, will enable you to enjoy finger sandwiches, scones, desserts, and of

course, the requisite teas in old-world style at the Clayson House Museum, 224 E. Palatine Road, Palatine. Tickets at \$20 per person can be purchased at the Clayson House Museum any Tuesday, Thursday or Sunday afternoon. For additional information, please call 847-991-6460.

Walk With Us Into Palatine's Past

Join us on Sunday, May 15, from 1:00 - 4:00 p.m. at Hillside Cemetery to hear costumed actors tell stories of people who lived in Palatine long ago. Admission is \$5 for adult non-members, \$4 for members, and \$2 for children under the age of 16. Bring the family and learn about the lives of our founding fathers.

Thank you for the

To everyone who participated, volunteered and donated to our 2010 holiday outreach programs, thank you again for all your support, devotion and your gift of giving back. Because of your loving hearts and caring ways we were able to:

- Serve over 400 families with Thanksgiving dinners
- Provide 322 families with gifts in this year's Adopt-A-Family Program
- Present 647 Angel Tree gifts to children and senior citizens
- Partner with School District 15 social workers to help additional children recognized in need with new toys, books, games, hats and mittens that were donated by local businesses and community members.

A sincere thank you to All Saints Lutheran Church and Prince of Peace Lutheran Church for kindly offering their facilities again as distribution sites. Our heartfelt thanks and appreciation to you and your families this 2010 holiday season and best wishes for a safe and peaceful New Year.



Thanksgiving Basket Program - Thank You

"We are overwhelmed by the generosity of the Palatine Township in providing the residents of St. Joseph's Home with a bounty of food to fill our shelves! It is with grateful hearts that we offer our thanks to you for assisting us in our ministry of caring for the elderly. Especially at this time of the year, your generous gift helps us to brighten the lives of our residents and assure them of the certainty that they are loved and genuinely cared for."

Highway Commissioner's Report - John D. Powers

Winter 2010-2011

Winter 2010 started out just like the two previous years, with a cold and snowy December. The Road District crew was busy keeping the roads clear for all of your Christmas celebrations. We are in the midst of our second year of a reduced salt diet to clear the roads of snow and ice. While using less salt, we had to do a little more plowing in order to push the snow to the edge of the roadway, which may have meant you had to do a little more shoveling. Together, we were able to reduce the amount of salt that enters into our streams and rivers. This technique provided you with the same level of service while reducing our salt usage. This winter 2010/11 season we anticipate a 30% reduction of salt usage from the previous year.



Summer 2011 Asphalt Paving

This year's asphalt resurfacing program will include the following streets: most of the Thunderbird Estates Subdivision and Joan Drive, Nantucket Lane, Whispering Oaks, Hidden Oaks Drive, Deerpath Lane and Crooked

Creek Lane in the Barrington Trails Subdivision area, located in the northwest corner of the Palatine Township. For a complete list of streets and locations please visit our website, www.palhwty.com. In the Capital Improvements section you will find the location maps that outline the proposed improvements. Also, be sure to stop back to get all your permit forms, weather conditions, water quality and other useful information.



Yard Waste Program 2011

This successful, annual program will start on **April 11, 2011** and will continue until **November 22, 2011**. A packet with the yard waste rules, pickup schedule and yard waste stickers will be delivered to resident's in late March. For your gardening use,



we have compost (aged ground up yard waste) available for pick-up at the Road District facility located at **530 N. Smith Street, Palatine**. Call **847-358-6336** for directions.

Gift of Giving Back



To the Palatine Community

"My name is Darlene, I want to thank, each and everyone, for the outpouring of love and kindness you showed my family during this rough time in our life, It really say a lot about people who can take a complete stranger name, take it to the store and purchase items that you know we would really appreciate. Since receiving these fine acts of kindness, I often have reflected with watery eyes how thankful we are to have such people like you in our community. May the sweet sacrifices that you have shown be rewarded in heaven and earth. Words will never explain how my family thank you for all your Love. "

" We thank you for the time you took to do this for our family. You really made this Christmas a happy one for this family. Once again thank you and we wish you and all your family a merry Christmas."

"Dear Christine, Palatine Township staff and all Palatine Township Angel Tree donors, The entire Palatine Township ECDEC program staff, families and especially the children wish to thank you for the extremely charitable Angel Tree gifts. Our staff was astounded by the kindness and generosity the donors extended to our children. At the pick-up, parents were very grateful and the children's eyes were "filled with wonder and gleeful expectation!" So, please know how wonderfully you all have helped to make a child's holiday a little bit brighter and happier."

IMPORTANT VOTING INFORMATION for the April 5, 2010 GENERAL ELECTION

- March 8 Last day to register to vote in the April 5 General Election
You may register at the Township Center during regular business hours.
You will need two forms of I.D., with one showing your current address.
You need to be a U. S. citizen and be 18 years of age or older by Nov. 2, 2010.
- March 9-29 Grace Period Registration and Voting
This is the only way to register or change your address or name after the regular registration period ends. It is also the only way to vote if you are not registered or if your voter registration is not up to date. The only sites available for this is the Cook County Clerk's Office at 69 W. Washington in Chicago or the Rolling Meadows Courthouse at 2121 Euclid Avenue.
- March 14-31 Early Voting
Palatine Village Hall and Rolling Meadows Courthouse are Early Voting Sites in our area.
- March 31 Last Day to request a mail-in absentee ballot
- April 1 In-Person absentee voting at Clerk's Office downtown and at Rolling Meadows Courthouse and four other suburban courthouses .
- April 4 Voted mail-in absentee ballots can be postmarked of in-person absentee voting at the Clerk's downtown Chicago office and five suburban courthouses.

- Offices Up for Election - some offices will not be on the ballot, depending on which municipality you live in:
- | | |
|--------------------------|--|
| Municipal | Mayor, President, Clerk,
Treasurer, Alderman, Trustees,
Council Members, Commissioners |
| Park District | Commissioners |
| Library District | Trustees |
| School Districts | Board Members |
| Community College | Trustees |
| Fire Protection District | Trustees |

The Clerk's Office is asking those who are interested in becoming Election Judges to contact the Cook County Clerk's Office at 312-603-0966.



Spotlight on ...

The Barrington Career Center (BCC)

Teaches Job Search Skills

The Barrington Career Center (BCC) teaches job search skills to unemployed professionals and coaches our clients through the search process. By learning how to uncover their strengths and accomplishments and to communicate their uniqueness, our clients build confidence and gain something most have lost along the way--hope. While we teach job search skills, what we really do is change lives. Here's how we do it.

One on One Coaching

Clients can meet with any one of our experienced business coaches as often as they like. Regularly meeting with a coach gives job seekers the opportunity to get individual assistance on all aspects of the job search. Resume development, interview preparation and practice, networking tips--these and more are covered in private coaching sessions.

Interviewing Workshops

Getting great job offers is directly connected to being able to interview effectively. Our top notch interviewing workshops are small and interactive, offering lots of time to practice this all important skill.

Networking Sessions

Weekly networking sessions give job seekers a chance to practice their Elevator Speeches and meet others in transition and widen the network of support needed during this challenging time.

Skill Building Seminars

Weekly seminars, workshops and presentations are offered on a wide variety of subjects. From how to write a compelling resume to how to stay motivated, our workshops cover a range of topics and are presented by experienced HR and business executives. Videos of our top sessions are available online to BCC clients.

Professional Office Support

Open 5 days a week, our office provides clients computer workstations, printers, copier, scanner and fax as well as our robust job search library.

More...

Career Assessments, interactive website featuring the Ask an HR Professional service, Elevator Speech Workshops, Making the Cold Call Workshop, This is Not Your Parents' Job Search 5-week program for GenY-ers and more. Check out our website and event calendar at www.barringtoncareercenter.com/ for details on these offerings and more.

We are currently serving 57 residents of Palatine Township and a total of 370 job seekers. Over the past year, 32 township residents have reported accepting positions such as Sr. Project Manager, Software Engineer, CFO, Auditor, Loan Processor and Contract Analyst.

Thank you to Palatine Township for helping us support so many unemployed community members. With its support, we will continue to teach people how to find work--to give them confidence and hope--and to change their lives.

600 Hart Road, Suite 275, Barrington, IL 60010. 847-304-4157
careers@barringtoncareercenter.com

Review Your Property Tax Exemptions

— Assessor Terry Kelly, CIAO

Are you receiving all the property tax exemptions you are entitled to? Springtime is a great time to pull out your tax bill from last winter and check to make sure you are getting all your property tax exemptions. Knowing the available exemptions can dramatically lower your property tax bills.

Exemptions available to the homeowner are:

Homeowners Exemption. If you own your home as of January 1, you are entitled to a Homeowner's Exemption, a dollar reduction in the assessed value. The assessed value is used to calculate property taxes on your home. Depending on several factors, the exemption amount can range from a few hundred dollars to several thousand dollars.

Senior Exemption. Have you or your spouse turned 65 years young? If so, you are entitled to an additional exemption of \$4,000.

Senior Freeze Exemption. This Exemption is based on household income. Currently, if you or your spouse is 65 years old and your household income is below \$55,000, you are entitled to a "freeze" of your home's assessed valuation.

Returning Veterans Exemption. A one-time \$5,000 homeowners exemption available the year in which a veteran returns. This is in addition to any other exemptions.

Disabled Veterans. Different levels of exemptions are available depending on level of disability. Call the Assessor's Office for more details.

Also, please note that you will be able to appeal the 2010 assessed valuation of your home with the Board of Review. We anticipate the Board of Review opening up for Palatine Township appeals in late March or early April of 2011.

We look forward to helping you reduce your property taxes.

Transparency Initiative Approved by Board

— Clerk Lisa Moran

At the September 2010 Township Board Meeting I asked the Board to consider approving a Transparency Initiative. This Initiative addressed deficiencies in providing adequate information on the Township website, most specifically financial. My Initiative was based on the non-partisan Illinois Policy Institute's Ten Point Checklist addressing transparency issues in local government units. This Initiative was approved and now ensures that Township residents can go online to our Township's website and easily gain access to a vast array of information without having to submit a separate FOIA (Freedom of Information Act) request.

The Ten Point List includes the following and where to locate it on our website:

- Contact Info for both Administrative and Elected Officials - under Contact Us tab
- Board Meeting Agendas - under Clerk's Office/Minutes tab
- FOIA Contact Info and electronic FOIA submissions - under Clerk's Office/Minutes tab
- Budget Information - under Finances tab
- Financial Audits - under Finances tab
- Monthly Expenditure Reports - under Finances tab
- Annual Wage Reports - under Finances tab
- Contractual Information - under Finances tab
- Lobbying Information - under Finances tab
- Tax and Fee Information - under Transportation and Services tabs



Calendar of Events for Palatine Township Funded Agencies

Alexian Brothers Center for Mental Health (ABCMH) provides holistic and compassionate services to those with emotional problems or chronic mental illness in Chicago's northwest suburbs. The Center offers counseling, medication management and a variety of comprehensive services that are tailored to each unique individual.

11th Annual "Chip-In" Golf Outing

Enjoy a day filled with great golf, fun games, raffles and more Monday, June 13, 2011, 10:30 a.m. to 7:00 p.m.
Makray Memorial Golf Club, Barrington
Contact: Joan Matthys at 847-385-7306 or Joan.Matthys@alexian.net

The Bridge Youth and Family Services offers youth leadership development, individual and family counseling, substance abuse counseling, psychiatric assessment, community education, support groups, mentoring, parenting skills training, community outreach and immediate crisis services for homeless and runaway youth in Palatine Township.

The Bridge Gala, A Night Under the Big Top – The Greatest Benefit on Earth

Saturday, April 16, 2011, 6 p.m. - Midnight
The Meadows Club, Rolling Meadows
Contact: Lisa Hanson-Braun at 847-485-3085 or lbrown@bridgeyouth.org

Catholic Charities fulfills the Church's role in the mission of charity to anyone in need by providing compassionate, competent, and professional services that strengthen and support individuals, families, and communities based on the value and dignity of human life.

The 8th Wonder of the World Tour

Saturday, May 21, 2011, 5 p.m. – 11 p.m.
Incomparable Sanfilippo Estates, Barrington Hills
Contact: Mary Insprucker, 847-376-2118 or minsprucker@catholiccharities.net

Countryside Association for People with Disabilities is a community organization that provides work opportunities and training to reduce unemployment, assistance to families in need through respite services, support to help individuals and families maintain their independence, and health activities to combat isolation.

6th Annual Opportunity Walk

Sunday, June 5, 2011, 9:00 a.m. to 1:00 p.m.
Independence Grove, Libertyville
Contact: 847-540-3705

Glenkirk provides quality, lifetime support and services that empower individuals with developmental disabilities to participate fully in all areas of community life. Today Glenkirk serves over 1,350 individuals in a comprehensive network of programs and services including: early intervention, respite care, vocational services, residential services, information and referral, and home-based services.

Glenkirk's Annual Corporate Event

Enjoy a buffet luncheon, silent and live auctions and of course, the excitement of the races.
Saturday, May 21, 2011, noon
Arlington Park, 2200 Euclid Ave., Arlington Heights
Contact: Julie Fischer at jfischer@glenkirk.org

Hospice & Palliative Care of Northeastern Illinois, a non-profit, community-based agency, has been providing comprehensive end-of-life care to adult and pediatric patients for 28 years, and is Joint Commission Accredited. Its Center for Loss and Hope provides bereavement support to more than 5,000 clients each year.

Circle of Hope at Tall Oaks Gala

Saturday, June 25, 2011, 5:30 p.m. to midnight
Tall Oaks Estate in Barrington Hills
Contact: Kristin Frazier at 224-770-2414 or kfrazier@HospiceAnswers.org

Journeys from PADS to HOPE provides emergency and supportive services to homeless and "at risk" individuals and families in the northwest suburbs of Cook County.

5K Run / Walk for HOPE

Saturday, April 2, 2011, 10:00 a.m. Run / Walk begins
Downtown Arlington Heights
Details: www.padstohope.org
Contact: 847-963-9163 x 16 or events@padstohope.org

Little City Foundation engages and supports individuals, families and communities throughout the Chicago area to ensure that children and adults with autism and other intellectual and developmental disabilities can realize their unique potential to live safely, learn continuously, explore creatively and work productively throughout their lifetimes.

37th Annual Smiles Tag Days

Help collect donations at many local locations.
Friday – Sunday, April 15 - 17, 2011, 6 a.m. to 6 p.m.
Contact: Kathryn Nelson at 847-221-7804 or knelson@littlecity.org

Eagle Scout Project Restores Pioneer Cemetery – Terry Kelly, Assessor Palatine Township

A recently completed Eagle Scout project has helped restore one of Palatine Township's five historic pioneer cemeteries. Eagle Scout Brian Winkelmann's project took place at the Avery Wolfrum Cemetery, located in Rolling Meadows.

Eagle Scout Brian Winkelmann had proposed an ambitious project to the Township Cemetery Committee and to the Township Board. His project included the creation of a woodchip path, stone benches and the mounting of a previously donated historical plaque. Plus, Eagle Scout Winkelmann proposed to work on some of the low lying, sunken areas of the cemetery that collected water during heavy rains. Very ambitious indeed.



"What Eagle Scout Brian Winkelmann accomplished was absolutely outstanding," stated Cemetery Committee Chairman Terry Kelly. Using rented equipment the path for the wood chip trail was first laid out. Volunteers and members of Winkelmann's Troop 335 then moved the turned up dirt to the depressed areas. With the path cleared Brian Winkelmann's plan first called for a layer of stone to help with drainage and then the woodchips. Underneath the entire path was landscape fabric to prevent weeds.

The final touch was the mounting of an informational plaque into a 3,000 pound boulder. Even with the many volunteers a crane was still used to lift the boulder into place. The end result was a fitting memorial to what was once called, "The Lost Cemetery." Thanks Brian!

Dedicated to providing educational information and materials to the citizens of Palatine Township.

CAR-RT
PRESORT
Postal Customer, Local
Palatine Township, IL

“People Serving People”



Linda L. Fleming
Supervisor
lfleming@palatinetownship.com



Lisa Moran
Town Clerk
lmoran@palatinetownship.com



Terry Kelly
Assessor
tkelly@palatinetownship.com



Sue Johnson
Collector
sjohnson@palatinetownship.com



John Powers
Highway Commissioner
jpowers@palatinetownship.com



Vince Farina
Trustee
vfarina@palatinetownship.com



Art Goes
Trustee
agoes@palatinetownship.com



William G. Huley
Trustee
whuley@palatinetownship.com



Sharon Langlotz-Johnson
Trustee
sljohnson@palatinetownship.com

Supervisor's Message

PALATINE TOWNSHIP

Serving People



Palatine Township's mission is "Serving People" as stated on the Township seal. I want to thank you very much for being a helping hand in our efforts to serve the Palatine Township community. The support that donors provided during the past holiday season was nothing short of amazing. Your generosity in providing Thanksgiving baskets, gifts for the Adopt-A-Family and Angel Tree programs was outstanding. Thank you also to the many residents that donated their time to help facilitate these events by helping in the preparation or distribution phases. Additional related facts and figures of these programs are enumerated by our Outreach Coordinator Christine Favia in her article on page four of this newsletter. We cannot thank you enough for your outward show of support.

You will see an article on page three about the "Lending Closet". It is something that can be very helpful to many individuals in their time of need. Please keep them in mind should you have a use for the supplies they offer.

Our food pantry has continued to be supported by the many food drives and individual donations of food and cash. All forms of support are appreciated. We ask that if you are planning a food drive that you first contact Food Pantry Coordinator Laura Hoover to determine the need for specific items. We also are hopeful that some food drives will consider moving their events to the spring or summer when the food pantry's donations are lower and there is a greater need of donations. Our food pantry is affiliated with the Greater Chicago Food Depository whereby we are able to purchase food much cheaper so cash donations are always very welcome. It allows us to stretch your donations and purchase more food with less money.

We appreciate the unrestricted donations that are given to the Needy Family Fund (501C-3 Corporation). These donations allow our General Assistance office to assist those that do not qualify for regular General Assistance programs and may have suffered a job loss, an unexpected medical expense or experienced some other financially devastating news. Please consider making an unrestricted donation to the Palatine Township Need Family Fund. If your employer offers a Matching Gift Program, your donation may be matched or doubled. What a terrific way to assist more people in need in our Township. Please check with your Human Resource Department to determine if there is a Matching Gift Program in place at your company or perhaps you can help to create one.

A Needy Family Fund Donation form is provided on page 3 for your use. All donations, whether they are large or small, are appreciated and are tax deductible.

We look forward to working with you and for your continued support in 2011.

Linda L. Fleming, Supervisor